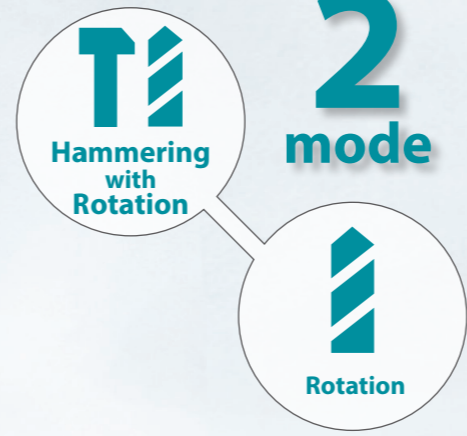




Adapted for SDS-PLUS bits



# Cordless Rotary Hammer DHR183 18 mm (11/16") Dust collection system DX16



Lightweight  
**3.2 kg**  
Tool body (DHR183+DX16) with Side grip and BL1860B

photo: DHR183+DX16

## Combination Hammer and Rotary Hammer with Dust collection system series

**40V max**  
HR008G+DX10  
HR009G+DX11  
Capacity: 30mm



**AC**  
HR3011FC+DX10  
HR3012FC+DX11  
Capacity: 30mm



**40V max**  
HR001G/ HR003G+DX12  
HR002G/ HR004G+DX14  
Capacity: 28mm



**18V x2**  
DHR280/ DHR282+DX08  
DHR281/ DHR283+DX09  
Capacity: 28mm



**40V max**  
HR007G+DX15  
Capacity: 28mm



**AC**  
HR2652/ HR2653  
HR2653T/ HR2663  
with DX15  
Capacity: 26mm



**18V**  
DHR242+DX06  
DHR243+DX07  
Capacity: 24mm



**18V**  
DHR183+DX16  
Capacity: 18mm



## Accessories

**Dust collection system**  
DX16

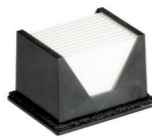
**Sealing cap**  
5 pcs/set  
Part No.  
422992-7



**Dust case set**  
Part No.  
1911P5-0  
\*1911P4-2



**HEPA Filter set**  
Part No.  
199596-7



**Dust cup set**  
Part No.  
1911P8-4



**Tool hanger set**  
Part No.  
1911K0-5



\*For North American countries only

## Charging Time

Battery	Fast Charging	
	DC18RC	DC18SD
BL1815N 1.5Ah	15 min	30 min
BL1820B 2.0Ah	24 min	45 min
BL1830B 3.0Ah	22 min	60 min
BL1840B 4.0Ah	36 min	90 min
BL1850B 5.0Ah	45 min	110 min
BL1860B 6.0Ah	55 min	130 min

The weight may differ depending on the attachment(s), including the battery cartridge. The lightest and heaviest combination, according to EPTA-Procedure 01/2014, are shown in the table. Items of standard equipment and specifications may vary by country or area.

## Cordless Rotary Hammer

**DHR183 18 mm (11/16") Adapted for SDS-PLUS bits**

Variable Speed	Impact energy Capacity	EPTA-Procedure 05/2009: 1.7 J Concrete: 18 mm (11/16") Steel: 13 mm (1/2") Wood: 24 mm (15/16")
Brake	Blows per minute (BPM)	0 - 5,000
Reversing	No load speed (RPM)	0 - 1,100
Constant Speed	Sound pressure level	90 dB(A)
Dust Collection	Sound power level	101 dB(A)
Built-in Job Light	Vibration level	Hammer drilling into concrete: 7.5 m/s <sup>2</sup> w/ BL1830B / BL1840B / BL1850B / BL1860B: 288 x 89 x 215 mm (11-3/8 x 3-1/2 x 8-1/2") w/ BL1820B / BL1815N: 274 x 89 x 197 mm (10-3/4 x 3-1/2 x 7-3/4")
Adapted for SDS-PLUS bits	Dimensions (L x W x H)	
Carrying Case	Net weight	2.1 - 2.9 kg (4.6 - 6.4 lbs.)

Standard Equipment : Side grip, Depth gauge, Battery, Charger

**Makita Corporation**

3-11-8 Sumiyoshi-cho, Anjo, Aichi, 446-8502 Japan

PRINTED IN JAPAN 202304

## Cordless Rotary Hammer DHR183

Capacity  
Concrete: 18 mm



**BL MOTOR AVT XPT**

## Dust collection system DX16 (option)

Max bit Capacity  
Dia. 20mm  
Length 165mm



**HEPA filter**

# Compact and lightweight design

suitable for upward and horizontal applications

Adapted for SDS-PLUS bits  
Bit is sold separately.



Overall length  
**288 mm**  
battery: BL1860B

Lightweight  
**2.4 kg**  
battery: BL1860B  
with Side grip

## Excellent drilling performance

- Concrete with compressive strength of 40N/mm<sup>2</sup>
- Diameter : Ø10.5mm(3/8"), depth of 60mm(2-3/8")

Work Speed  
About **150% UP**  
Compared to our predecessor model

Work Amount  
About **105 pcs.**  
Battery: BL1860B

## XPT eXtreme Protection Technology



**BL MOTOR**

High power with BL motor

# Dust collection system DX16 (option)

Lightest weight cordless dust collection rotary hammer

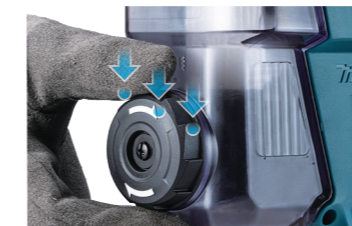
Max. attachable bit size  
Diameter: 20mm  
Length: 165mm  
Effective length: 105mm

Dimensions:

Tool body with Side grip  
(L x W x H)  
416 x 134 x 215mm

Lightweight  
**3.2 kg**  
Tool body (DHR183+DX16) with Side grip and BL1860B

Filter cleaning mechanism  
Dust can be removed from the filter by turning a dial on the dust case.



One-touch easy attachment/removal



Depth gauge  
Dust box capacity: 400ml



Compared to our predecessor model

## HEPA filter

Equipped with HEPA Filter having a high particle capture rate, which is also used for home appliance vacuum cleaners.



## AVT

### Anti-Vibration Technology

Low vibration  
**7.5 m/s<sup>2</sup>**

Measuring point: at Main handle  
DHR183 only

- Test conditions
- Downward drilling, Depth: 80mm
  - Drill diameter: Ø10.0mm
  - Concrete compressive strength: 40N/mm<sup>2</sup>
- According to IEC62841-2-6.

